



MAJOR CUSTOM CABLE

A Neutrik Group Company



2025/2026

PRODUCT CATALOG.



MAJOR CUSTOM CABLE

A **Neutrik Group** Company

Founded in 1990, Major Custom Cable is the premier manufacturer of custom cable assemblies in the United States. Based in Missouri, we provide cabling solutions for a variety of industry segments including Medical, Defense, Aerospace, Professional Audio, Video and Lighting, OEM and others.

An ISO 9001:2015 registered facility with over 50,000 sq. ft. of world class manufacturing and warehousing space, we offer a wide range of products manufactured to the highest standards to best serve the communications and IT industries. Major Custom Cable ensures high-quality design by employing highly-trained engineers and acquiring the most up-to-date cable assembly equipment. Our skilled staff can provide cost saving solutions for any scope of project, from simple to complex assemblies. We test every single solution for 100% functionality and all of our products are supplied with a Limited Lifetime Warranty.

At Major Custom Cable:

- Real people answer your calls, not automated attendants
- Quotes and orders are processed by professional Account Executives
- Our experienced and knowledgeable Customer Service and Technical Representatives are ready to assist you
- Custom assembly projects are welcome
- Competitive prices
- Most orders ship in three days or less
- Every cable is 100% tested
- Free blind drop shipments
- Modern production facility is ISO 9001:2015 Certified
- Quality and experience since 1990

If you are a MCC customer we sincerely thank you for your business and look forward to working with you again soon. If you are not a MCC customer we encourage you to call today. See for yourself the difference quality products and great service from the professionals at MCC will make for you.



MAJOR CUSTOM CABLE

281 Lotus Dr.
Jackson, Missouri 63755

www.MajorCustomCable.com

(800) 455-6224



The ISO 9000 family addresses various aspects of quality management and contains some of ISO's best known standards. The standards provide guidance and tools for companies and organizations who want to ensure that their products and services consistently meet customer's requirements, and that quality is consistently improved.



Major Custom Cable has successfully completed the Neutrik assembly training for: opticalCON® DUO SM, MM hybrid and non-hybrid fiber optic cables; opticalCON® QUAD SM and MM fiber optic cables; opticalCON® MTP fiber optic cables; opticalCON® breakout solutions; opticalCON® repair center (including drums); opticalCON® measuring and cleaning.



The CCTT course provides expert level training on the Versiv / DSX cable analyzer series. Investing in the Fluke Networks Certified Cabling Test Technician program will not only improve installation skills, but also your effectiveness and productivity on the job - testing, certifying and troubleshooting cabling systems.



CONTENTS.

6	FIBER / MULTIMODE
7	FIBER / OM3, OM4, OM5 MULTIMODE
8	FIBER / SINGLEMODE
9	FIBER / OTDR LAUNCH BOXES
10	FIBER / MTP - MPO
11	FIBER / MTP - MPO
12	FIBER / MULTIFIBER ASSEMBLIES
13	FIBER / PIGTAIL KITS & ACCESSORIES
14	FIBER / FULL AXIS
15	FIBER / PATCH CABLES - FIBERFOX
16	FIBER / FIBERFOX
17	FIBER / FIBERFOX
18	FIBER / OPTICALCON HYBRID
19	FIBER / SCHILL REELS
20	BROADCAST / RUGGEDIZED
21	DEFENCE & AEROSPACE / PIERSIDE - TFOCA-II®
22	BROADCAST CABLES / OPTICALCON® ADVANCED
23	BROADCAST CABLES / OPTICALCON® ADVANCED
24	BROADCAST CABLES / OPTICALCON® LITE

CONTENTS.

25	BROADCAST CABLES / SMTPE
26	BROADCAST CABLES / SMTPE
27	BROADCAST CABLES / SDI COAX
28	COPPER / PATCH CORDS
29	COPPER / PATCH CORDS
30	COPPER / PATCH CORDS
31	COPPER / ETHERCON
32	COPPER / PATCH CORD BUNDLES
33	COPPER / DAS (DIGITAL ANTENNA SYSTEMS)
34	COPPER / ETHERCON ASSEMBLIES
35	COPPER / ETHERCON ASSEMBLIES - SPEAKON®
36	COPPER / POWERCON®
37	COPPER / POWERCON®
38	COPPER / XLR CABLE ASSEMBLIES

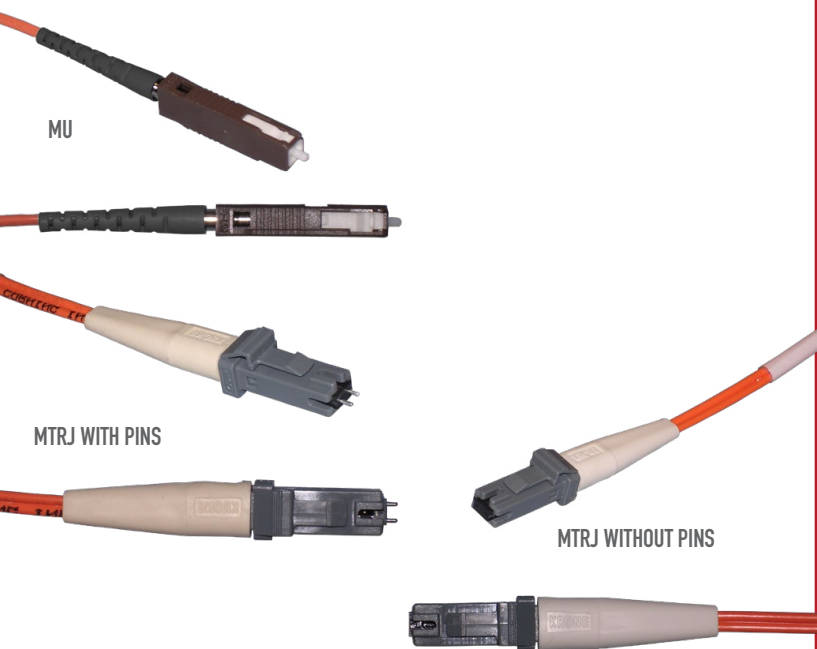
MULTIMODE PATCH CABLES.

Fiber optic patch cables connect fiber optic equipment to optical cross connects, patch panels, and data outlets within the telecommunications closet, equipment rooms and work areas.

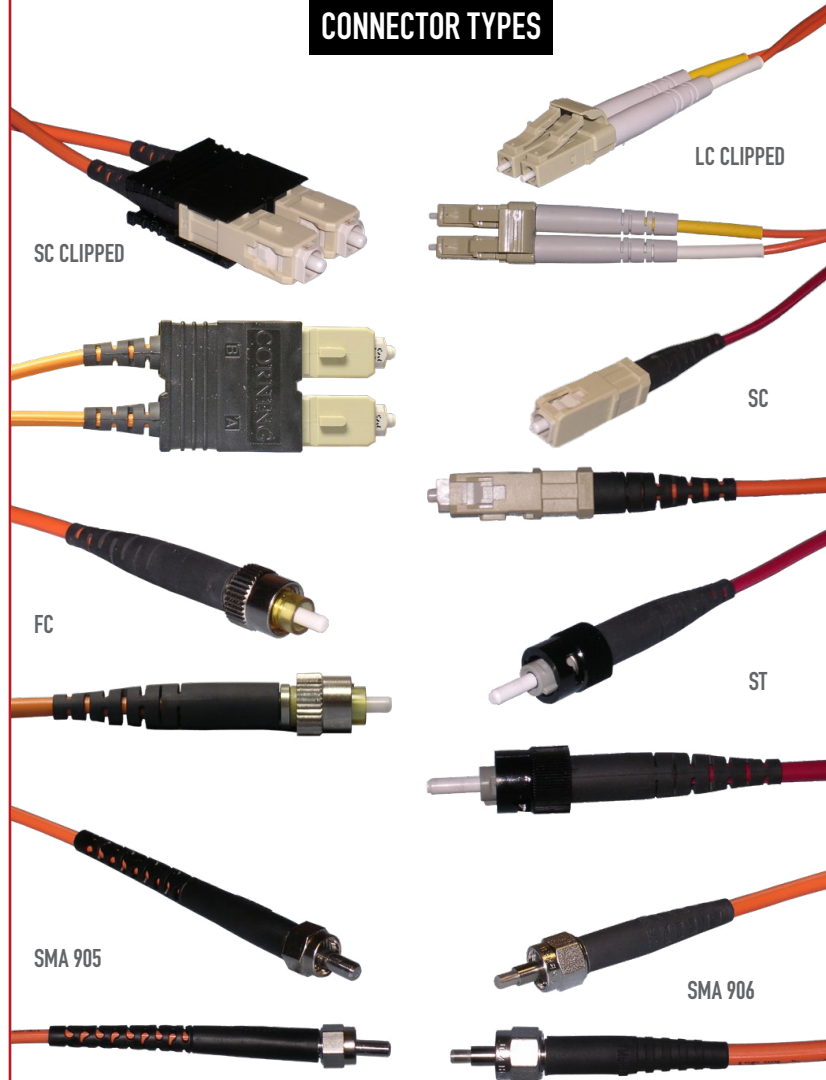
Multimode fiber optic cable has a large diameter core that allows multiple modes of light to propagate. Because of this, the number of light reflections created as the light passes through the core increases, creating the ability for more data to pass through at a given time. As a result of the high dispersion and attenuation rate with this type of fiber, the quality of the signal is reduced over long distances. This application is typically used for short distance, data and audio/video applications in LANs. RF broadband signals, such as what cable companies commonly use, cannot be transmitted over multimode fiber.

FEATURES

- Total immunity to electrical interference
- Multimode fiber assemblies are 100% tested
- Can be factory installed in innerduct
- Variety of jacket colors available
- Your choice of name brand or globally sourced components.



CONNECTOR TYPES



CHECKLIST

- SIMPLEX or DUPLEX?
- FIBER TYPE (62.5/125, 50/125 or 50/125 10gig)?
- CONNECTOR TYPE?
- JACKET (PVC, PLENUM or LSZH)
- LENGTH?
- PULLING EYE?
- CUSTOM LABELS (SHRINK or LABEL)?
- JACKET OD (3.0MM, 2.0MM, 1.6MM)?

OM3 / OM4 PATCH CABLES.

Major Custom Cable's full range of simplex, duplex, and mini round fiber patch cables offer the best transmission performance for your network. Fiber optic patch cables connect fiber optic equipment to optical cross connects, patch panels, and data outlets within the telecommunications closet, equipment rooms, and work areas.

Major Custom Cable's skilled production staff can manufacture fiber patch cords to your designated specifications.

- Laser Optimized 50/125 is designed to utilize VCSEL lasers in the 850nm window to allow transmission speeds up to 10 Gigabits per second (Gbps) over greater distance.
- Laser Optimized patch cords work with the Laser Optimized horizontal cable to achieve a 10-Gbps up to 550 meters depending on the grade of the horizontal cable.
- It is important to remember that Laser Optimized patch cords are backward compatible and can be factory installed in innerduct.
- Your choice of name brand or globally sourced components.
- 100% tested
- Compatible with Cisco BiDi Transceivers



CHECKLIST

- SIMPLEX OR DUPLEX?
- GRADE (150, 300, or 550)?
- CONNECTOR TYPE?
- JACKET (PVC, PLENUM or LSZH)
- LENGTH?
- PULLING EYE?
- CUSTOM LABELS (SHRINK or LABEL)?
- JACKET OD (3.0MM, 2.0MM, 1.6MM)?



OM5 PATCH CABLES.

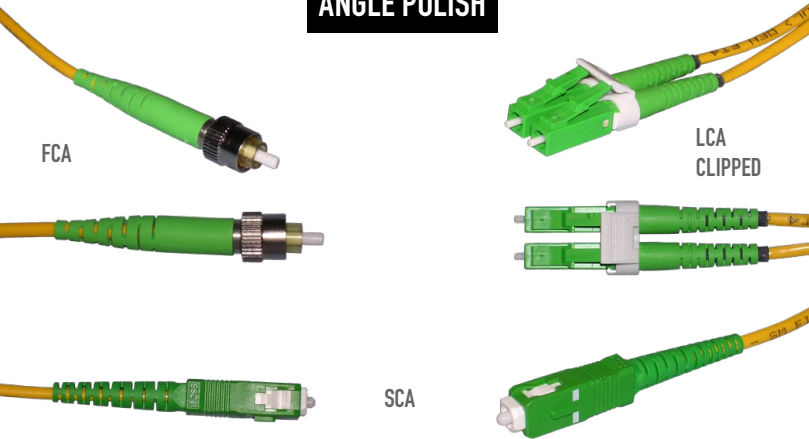
THE NEXT GENERATION OF FIBER IS HERE!

- OM4 EMB (Effective Modal Bandwidth) is only specified at 850 nm, while OM5 is specified both at 850 nm and 953 nm. OM5 is also backwards compatible to OM3 and OM4.
- OM5 is the official designation for WBMMF (Wide Band Multimode Fiber) by ISO/IEC 11801. WBMMF is intended for operation using VCSEL (vertical-cavity surface-emitting laser) transceivers across the 846 to 953 nm wavelength range.
- SWDM (Short-Wavelength-Division-Multiplexing) uses 4 wavelengths (850 to 940 nm) to transmit up to 25G per wavelength for a potential of 100G Ethernet using a duplex patch cord. This can help reduce costs over the more expensive MPO options.

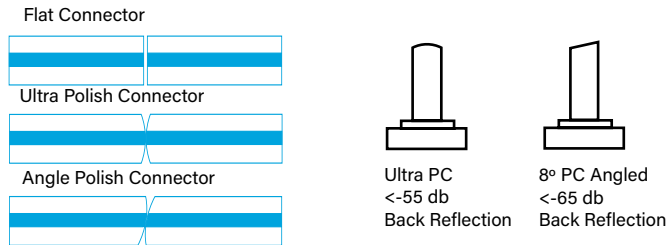
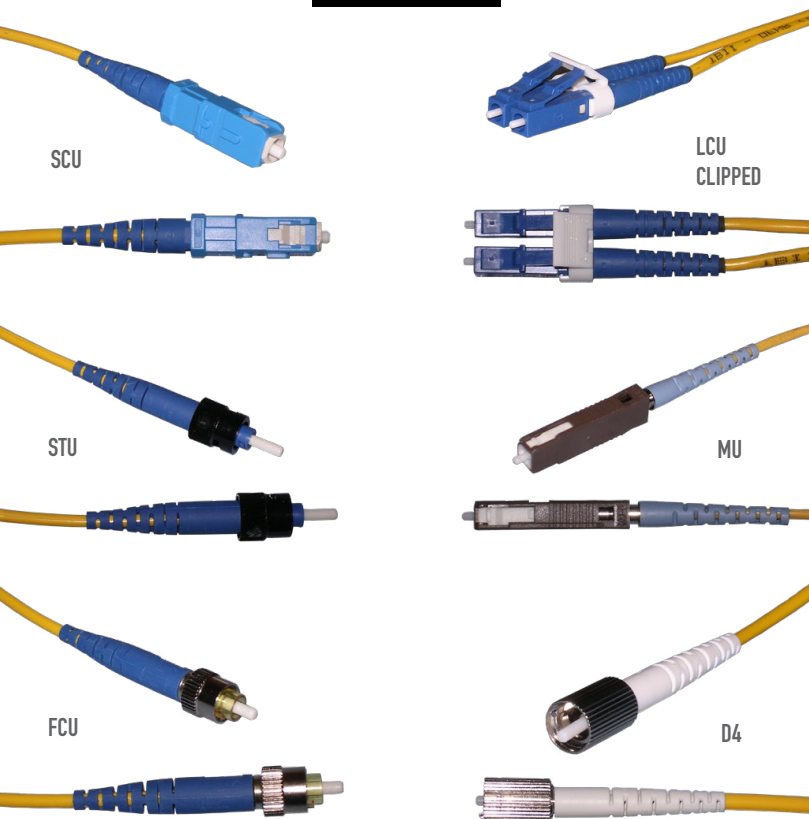
SINGLEMODE FIBER OPTIC.

Singlemode patch cords are used to connect fiber optic equipment operating at 1310 and 1550 nm wavelengths. Singlemode ultra polish or angle polish patch cords are required in DWDM applications

ANGLE POLISH



ULTRA POLISH



FEATURES

- Total immunity to electrical interference
- Tested for insertion and return loss
- Interferometric testing to comply with GR326-Core available
- Variety of jacket colors available

CHECKLIST

- SIMPLEX or DUPLEX?
- POLISH (ULTRA or ANGLE)?
- JACKET (PVC, PLENUM or LSZH)?
- LENGTH?
- PULLING EYE?
- CUSTOM LABELS (SHRINK or LABEL)?
- JACKET OD (3.0MM, 2.0MM, 1.6MM, 1.2MM)?
- CONNECTOR TYPE?

MODE CONDITIONING PATCH CORDS.

Our mode conditioning patch cords are designed to eliminate DMD effects which can occur when a single mode signal is launched into a multimode fiber. Mode conditioning patch cords are especially suitable for applications where new Gigabit 1000 BASE-LX routers or switches are being deployed into existing multimode plants.

- Adapt to Gigabit Ethernet using existing multimode cable plant
- Simply plug the singlemode connector into the Transmit side of the 1000Base-LX equipment and the multimode connector into the receive side of the equipment
- Mode conditioning patch cords provide the overfill launch condition required by multimode cable plants
- Use mode conditioning patch cords in place of standard equipment-to-patch panel for 1000 Base-LX systems where multimode horizontal cable is used
- IEEE-802.3z compliant

CHECKLIST

- FIBER TYPE (MULTIMODE 62.5/125 or 50/125)?
- CONNECTOR TYPE?
- JACKET (PVC or PLENUM)?
- LENGTH?
- CUSTOM LABELS (SHRINK or LABEL)?
- JACKET OD (3.0MM, 2.0MM, 1.6MM)?

SAMPLE



- SC/SC Connectors
- 62.5/125 micron
- Duplex
- PVC

OTDR LAUNCH BOXES.

20.9" x 12.9" x 8.4"
INSIDE DIMENSIONS

16.9" x 9.9" x 6.5"
INSIDE DIMENSIONS



8.5" x 6" x 3"
INSIDE DIMENSIONS

USES

Fiber network troubleshooting – Used with an OTDR, (Optical Time Domain Reflectometer) a break in a fiber run can be detected within a few feet. The launch box provides a known length of cable. The events that show on the OTDR screen will indicate every connector, every splice, and any micro bend with the last event being the end of the cable.

- Design your Launch Box your way
- All fiber types and connector types are available

CHECKLIST

- FIBER TYPE (SINGLEMODE, MULTIMODE 62.5/125, 50/125, or LASER OPTIMIZED)?
- CONNECTORS?
- BARE GLASS LENGTH?
- NUMBER OF SPOOLS?
- LASER ENGRAVED FACE PLATE?

MTP®/MPO CABLES.

The quantity of data transmitted worldwide and the need for ever-greater bandwidth is growing exponentially. The number of network connections in data centers is rising rapidly, and traditional fiber cables can make your data center crammed and difficult to manage.

To meet this demand, Major Custom Cable offers MTP/MPO fiber connectors which increases bandwidth while reducing the footprint. MTPs (Multi-fiber Termination Push-on) and MPOs (Multi-fiber Push-on) are often used interchangeably. Major Custom Cable only uses the best quality Elite ferrules.

MTP/MPO cables play an important role in ultra-high-density cabling. They deliver the extra bandwidth needed for high data transmission applications, and also have the advantages of shorter installation times, tested and guaranteed quality, and greater reliability. Combining to meet the 40GBASE-SR4 and 100GBASE-SR10 standard, the MTP/MPO multi-fiber connector of MTP/MPO cables is about the same size as a SC connector but can accommodate 8, 12, or 24 fibers, thus offering savings in circuit card and rack space.

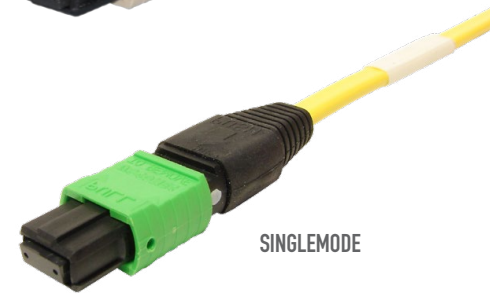
Major Custom Cable has combined the very best in both standard and lockable MTP based connectors in conjunction with military grade tactical cable. These cords are designed for rapid deployment in optical networks requiring high mechanical performance specifications, extreme environmental exposure, and highly dynamic operating conditions. These cables are able to withstand high tensile loads, severe crushing forces, repeated impacts, and extreme temperatures.



MULTIMODE



SINGLEMODE



FEATURES

- Composed of MTP/MPO connectors and fiber optic cables
- Available with singlemode or multimode fiber
- Ruggedized MTP solutions available for harsh environmental applications

CHECKLIST

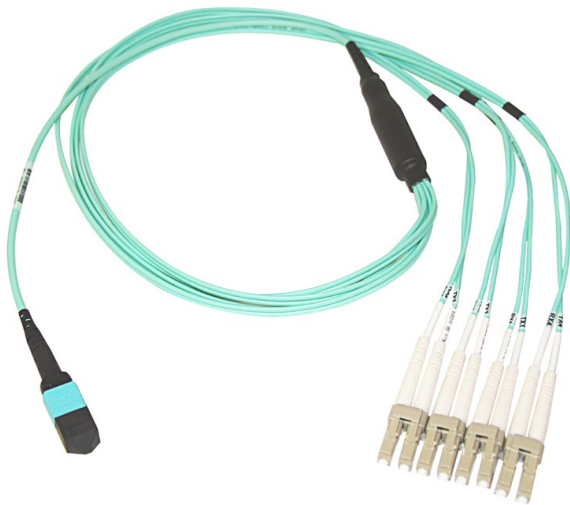
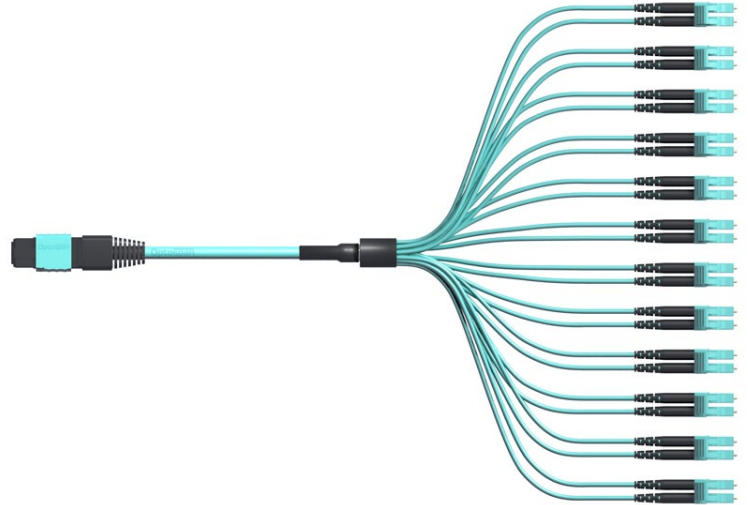
TYPE	ROUND, JACKETED RIBBON, OR BARE RIBBON
JACKET	RISER, PLENUM, LSZH, TACTICAL
LENGTH	
ARMORED	
GLASS	SINGLEMODE, 62.5 OM1, 50 OM2, 50 OM3, 50 OM4, OR 50 OM5
CONNECTORS	MALE MTP WITH PINS, FEMALE MTP WITHOUT PINS, UNIBOOT LC, LC, LC/APC, SC, SC/APC, ST, D4, MU, FC, FC/APC, OR MTRJ
CUSTOM LABELS	
CUSTOM PACKAGING	
CUSTOM KITTING	
BREAKOUT CABLE FAN-OUT LENGTHS	



MTP FOR 10 GBE

MTP12 / MTP24.

Current multi-mode optics standards for 40GbE and 100GbE optics use multiple 10Gbps lasers, simultaneously transmitting across multiple fiber strands to achieve high data rates. Because of the multi-lane nature of these optics, both 40GbE and 100GbE multi-mode optics use a different style of fiber cabling, known as MPO or MTP cabling. An MPO/MTP cable presents 12 separate strands of multi-mode fiber in a single cable. As with 10GbE optics over multi-mode fiber, an OM3 or OM4 grade MMF is needed to be able to cover longer distances (up to 150m).



40GBASE-SR4.

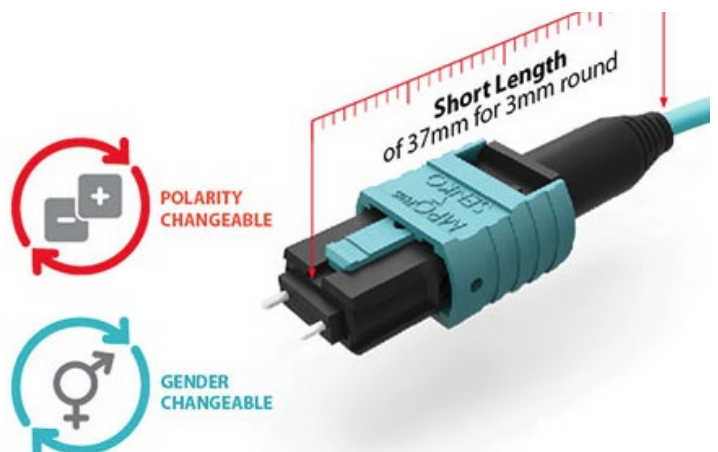
40GBase-SR4 optics use a single MTP/MPO cable for both transmit and receive, as SR4 uses four strands for transmit and four strands for receive. Maximum distance depends on the type of multimode fiber used.

REVERSIBLE MPO.

POLARITY & GENDER CHANGE MADE EASY WITHOUT OPENING THE HOUSING!

FEATURES

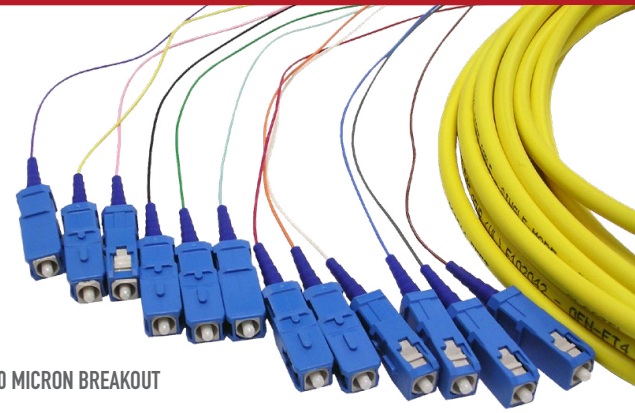
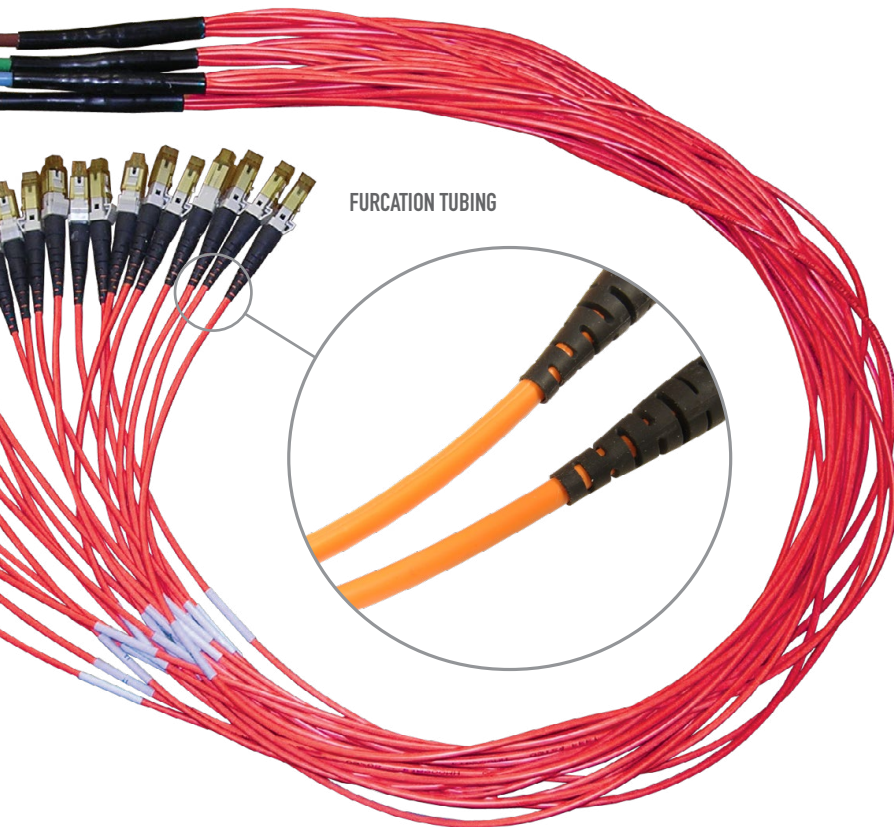
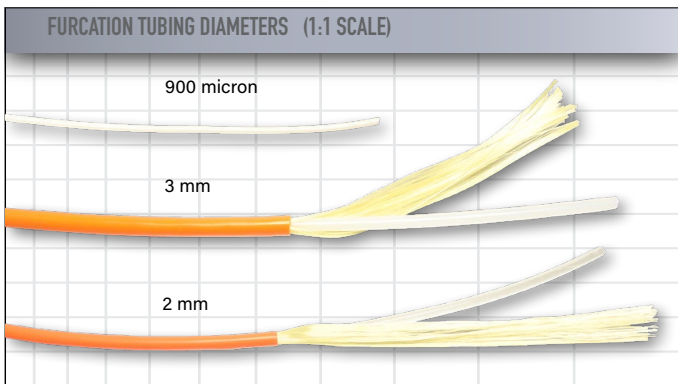
- All the benefit of the MPO Plus and more
- Industries shortest length of Total length of 37mm for 3mm round
- Polarity change in the field without any tool
- Simple gender change without taking off the housing
- Various boot types available
- Complies with MPO IEC and TIA/EIA requirements



MULTIFIBER ASSEMBLIES.

MCC fiber optic cables have been designed to allow for a high degree of flexibility and customization. By providing virtually limitless options, we are able to ensure that you receive a fiber optic cable designed for your specific needs. Our development and manufacturing teams work closely together to guarantee the highest level of precision each and every time.

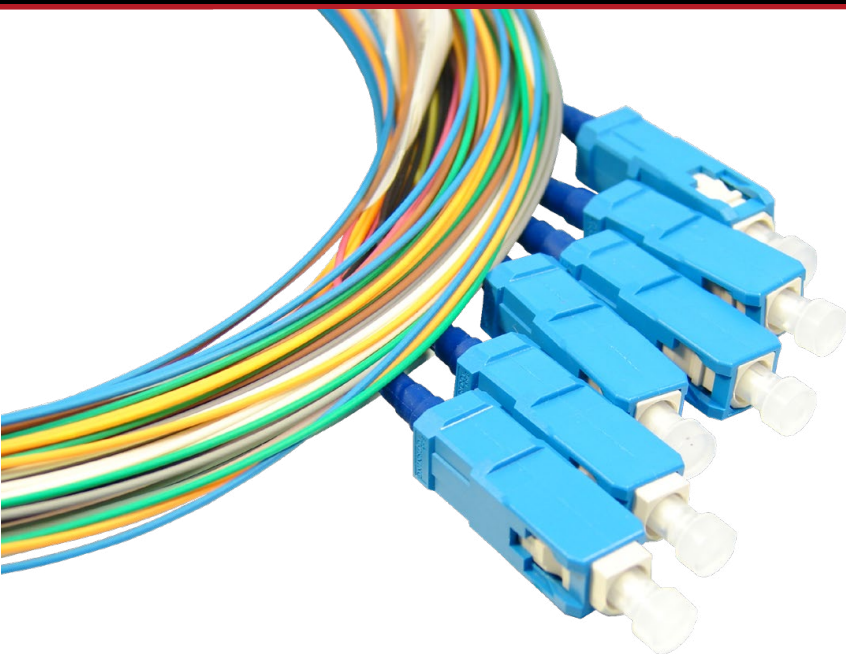
- Can be factory installed in innerduct
- 100% tested, results shipped with multifiber assemblies
- Your choice name brand or globally sourced components
- Available in indoor/outdoor solutions



PULLING EYES FOR ALL FIBER COUNT (AVAILABLE IN BRAIDED MESH AND CLEAR PLASTIC)

CHECKLIST

- NUMBER OF FIBERS?
- CABLE TYPE?
 - DISTRIBUTION STYLE?
 - BREAKOUT STYLE
 - INDOOR/OUTDOOR
 - LOOSE TUBE
 - DIRECT BURIAL
 - INTERLOCKING ARMOR
 - AERIAL
- CONNECTORS?
- JACKET (PVC or PLENUM)?
- OVERALL LENGTH?
- FIBER TYPE (MM, SM, LASER OPTIMIZED)?
- FURCATION TUBING?
- PULLING EYE?
- CUSTOM LABELS (SHRINK OR LABEL)?



900 MICRON PIGTAIL KIT.

FEATURES

- Ideal for fusion splicing with an installer friendly, easy strip buffer.
- New packaging keeps work organized for labor savings.
- Packaged as either a single strand or in color coded 6 and 12 pack versions.
- Available with SC, ST, LC, or FC connectors. PC, UPC, and APC performance options available.

CORNING™ GLASS OPTIONS:

- Singlemode SMF28e™
- 50/125 Infinicor®600
- 62.5/125 Infinicor®300
- 50/125 Infinicor®SX+



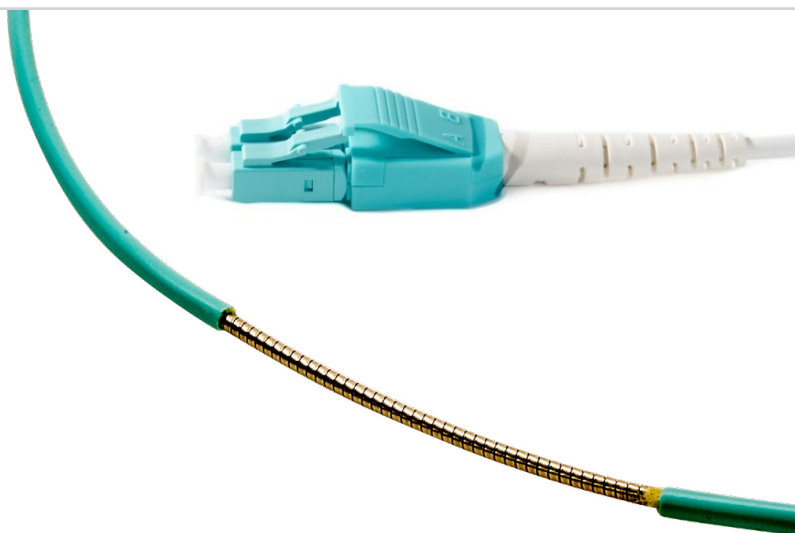
SPLICE TRAYS



NANOTEK FIBER.

CRUSH RESISTANT FIBER!

Nanotek Fiber offers OFCP UL-Listed plenum rating with a unique crush resistant jacketing. The interlocking stainless steel inner sheathing provides exceptional durability while maintaining an industry standard 10x overall diameter bend radius. Available with tool-less reversible LC uniboots for patch cords and multifiber cable assemblies with crush resistant trunks and fan-outs.

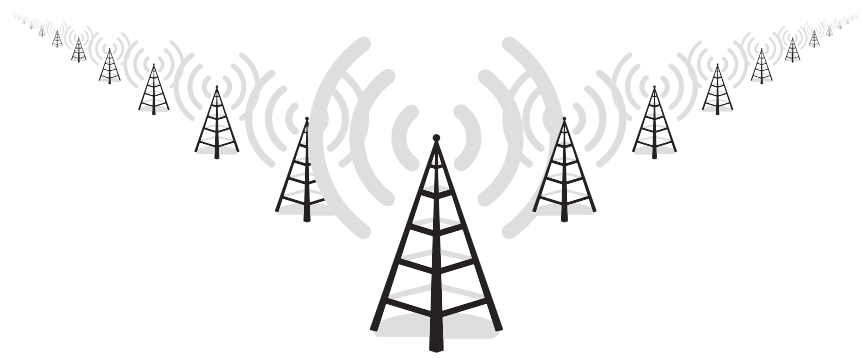


FULL AXIS.

THE NEXT GENERATION X-TTA SOLUTION.

Next generation WiMAX and Long Term Evolution (LTE) Fiber/Power/Signal To The Antenna (x-TTA) connectivity designs require rugged cable assemblies for outdoor use. For direct connection, these cable assemblies need to plug directly into the optical transceivers or other connector types through a bulkhead construction.

For this specific application, the connector design will need to accommodate for a large tolerance in Z-direction. Furthermore, the connector shell must allow for easy one handed mating. The FULL AXIS connector sealing systems were designed to function with a very large Z-axis tolerance, hence accommodating for the broadest range of transceivers on the market. This unique feature allows end users to pick almost any transceiver they wish.



APPLICATIONS

- WiMAX and LTE Base Stations
- Remote Radio Heads (RRH)
- Industrial outdoor applications
- Robotics
- Aerospace & Defense

KEY FEATURES

- Open bulkhead for easy access to SFP
- Positive mechanical feedback to operator when fully mated
- One-hand mating
- Duplex LC interface
- Bulkhead cutout allows for removal of transceiver through the bulkhead (no need to open RRH for transceiver replacement)
- Robust bayonet locking for easy, fast, and secure mating
- Multimode and single mode
- Water proof, dust proof and corrosion resistant.
- Expansion to RJ45 and Power possible
- Plug has tolerance free design, fully free floating on Z-axis
- No cable buckling during or after installation.
- Cost effective metal die cast bulkhead
- Field installable version available

MECHANICAL

- Designed to meet 150 N cable retention
- Designed to meet IP67
- LC interface
- Single- and Multimode
- Adapter footprint : 36mm x 36mm
- Bayonet style locking
- Duplex LC interconnect MM or SM
- No tools required
- Operating temperature : -40°C to +70°C
- Mating durability min : 100 cycles.

SPECIFICATIONS

- Temperature : -40°C to +70°C
- 150 N Pull Force : per IEC61300-2-4
- Protection Class : IP 65 (IP 67 on request)
- 100 Mating Cycles
- Vibration : per IEC 61300-2-1
- Salt mist : per IEC 61300-2-26
- Impact : per IEC 61300-2-12
- Temperature/Humidity : per IEC 61300-2-22

NEUTRIK-CORNING PREMISE PATCH CABLES.

With the convergence of IP based technology in conjunction with audio and video installations, the need for reliable cabling with maximum bandwidth and easy installation is a must.

Neutrik Americas x Corning premise cables combine premiere manufacturers of fiber optic glass, cabling and connectivity solutions. This product line is a tuned system designed to be used together for building top-of-the-line infrastructure networks. Seamlessly transition from premise networks to ruggedized deployments with Neutrik Premise Solutions and opticalCON® & FIBERFOX.



FEATURES

- Easily removeable duplex clips for LC connectors
- Changing polarity is quick and tool free
- Seamless transitions from premise to harsh environment cabling
- Suitable for risers and plenums
- Polarity trace printed on jacket for circuit identification • reduced diameter to relieve congested cable pathways
- Customizable length and configuration

FIBERFOX.

FIBERFOX SINGLEMODE

FIBERFOX singlemode expanded beam hermaphroditic chassis connectors are designed for robust applications across industries such as defense, railway, and petrochemical. Built to MIL-DTL-83526 standards, they ensure reliable performance in harsh environments by offering high immunity to dust, mud, and liquids. These connectors convert standardized LC patch cables into expanded beam solutions, acting as a "feed-through" and fitting standard D-size shells.

FIBERFOX MULTIMODE

FIBERFOX multimode expanded beam hermaphroditic chassis connectors are engineered for demanding applications in industries like broadcast, railway, and defense. Designed according to MIL-DTL-83526 standards, they provide exceptional reliability in tough conditions by resisting contamination from dust, mud, and liquids. These connectors convert LC patch cables into expanded beam solutions, fitting into standard D-size shells for seamless integration.

FIBERFOX PRODUCT LINEUP

- FIBERFOX EBC15 2CH Chassis Singlemode
- FIBERFOX EBC15 4CH Chassis Singlemode
- FIBERFOX EBC15 2CH Chassis Multimode
- FIBERFOX EBC15 4CH Chassis Multimode
- FIBERFOX EBC15 2CH Tactical assembly
- FIBERFOX EBC15 4CH Tactical assembly
- FIBERFOX EBC15 2CH Xtreme Tactical assembly
- FIBERFOX EBC15 4CH Xtreme Tactical assembly
- FIBERFOX EBC25 2CH Tactical assembly
- FIBERFOX EBC25 4CH Tactical assembly
- FIBERFOX EBC25 2CH Xtreme Tactical assembly
- FIBERFOX EBC25 4CH Xtreme Tactical assembly
- FIBERFOX EBC25 2CH Chassis Multimode
- FIBERFOX EBC25 4CH Chassis Multimode
- FIBERFOX EBC25 2CH Chassis Singlemode
- FIBERFOX EBC25 4CH Chassis Singlemode
- FIBERFOX Split Cables
- FIBERFOX Rotary Joint
- FIBERFOX 2CH foxBRID
- FIBERFOX 4CH foxBRID
- FIBERFOX Adaptor BOX
- FIBERFOX Accessories

FIBERFOX EBC15 2CH
CHASSIS SINGLEMODE



FIBERFOX ROTARY JOINT



FIBERFOX EBC15



FIBERFOX FOXBRID



FIBERFOX SPLIT CABLES



FIBERFOX ADAPTER BOX



FIBERFOX ACCESSORIES (SCD-FX)



FIBERFOX EBC25



FIBERFOX ACCESSORIES.

NOR-FX*

Color coding ring for FIBERFOX cable and chassis connectors (NO2M4DW-FX and NO4M4DW-FX).

Available colors:

- NOR-FX-2 - red
- NOR-FX-3 - orange
- NOR-FX-4 - yellow
- NOR-FX-5 - green
- NOR-FX-6 - blue
- NOR-FX-9 - white



SCD-FX

Rugged sealing cover for FIBERFOX chassis connector.

Fiber applications like drop down or stage boxes as well as outdoor devices require additional protection of the fiberFOX chassis connectors. The sealing cover encircles the entire lens ferrule and protects the interior completely from pollutant and ingress of water.

SCDP-FX-*

The SCDP-FX* sealing gasket provides a dust and water-resistant assembly for D-shape chassis connectors to front panels.



SCRJ-FX

The SCRJ-FX sealing cover and bend relief protects the ST Connector and increase the protection class of the complete rotary joint to IP66. It is suitable for various ST patch cable diameters, which are marked with a free-cutting groove. Fits only to the FIBERFOX NORJ50M3-FX Rotary Joint.



LC PATCH CABLE

High performance LC patch cable to connect the rear side of the opticalCON® DUO or opticalCON® QUAD and FIBERFOX chassis connectors with low insertion loss and optimized optical return loss values.



SCNOX-FX

Rugged and screwed sealing cover for FIBERFOX cable connector.

Fiber applications like drop down or stage boxes as well as outdoor devices require additional protection of the FIBERFOX cable connectors. The sealing cover encircles the entire lens ferrule and protects the interior completely from pollutant and ingress of water.



OPTICALCON HYBRID MED CABLE ASSEMBLY.

Pre-assembled male to male cable with 16 multimode fiber channels and 2 power pins. opticalCON HYBRID MED is more robust, reliable and easier to maintain than any other common hybrid systems. With new technology based on fiber lenses, Neutrik's opticalCON HYBRID MED achieves an extremely robust signal with minimal loss. The optical connection is exceptional well protected against dirt and dust by its lenses and an additional sealing cover.

OPTICALCON HYBRID MED CONNECTOR



FEATURES

- Ruggedized and dirt protected hybrid connection system
 - 1 lensed MPO connector with 16 fiber channels
 - 2 power contacts
 - 1 ground contact
- Available in standardized length (3m, 5m, 8m and 10m) and packaging versions
- Accommodates a unique lensed optical MPO connector
- Excellent dust and dirt protection Easy to maintain and nurse-proof design with glove protection
- Shielded system with EMI protection design
- Suitable for indoor healthcare applications

opticalCON® HYBRID MED BREAKOUT CABLE

High performance lensed MTP® breakout cable for permanent and temporary installations. Standard premium grade A LC's (multimode OM4) guarantee low insertion loss values and high performance.



opticalCON® HYBRID MED CHASSIS

Female chassis connector with ruggedized anticorrosive plating, 2 crimp contacts, 1 MPO feedthrough socket and 1 shell ground contact for cable shield.

The chassis connector acts as a feedthrough allowing simplified installations by connecting a MPO patch cable on the rear. The chassis cut-out has the same size like Neutrik's approved D-Shape design and is therefore simple to integrate into existing systems.



SCHILL REELS.

THE BEST IN THE BUSINESS!

Schill utilizes state of the art manufacturing and quality control process (DIN EN ISO 9001:2008) at their plant in Laichingen/Baden-Wuerttemberg, Germany. The design team is constantly striving to improve every aspect of the product, often relying on direct customer input to deliver the highest quality. The central item is customization, and that's why they are Major Custom Cable's partner of choice.

We normally stock open reels and then accessorize the unit based on the customer's needs. We always keep the most popular reels in stock in our Midwest warehouse, servicing all of the USA and Canada. If a particular reel is not in stock, we can have it shipped from the plant in Germany in as little as 5 working days.

**SL 500**

GT PROFESSIONAL SERIES

Unbreakable synthetic rubber and composite plastic, high-quality fittings, spool brake, completely customizable.

**SK 4730****GT 235**

HT CLASSIC LINE

Heavy-duty steel constructions, interchangeable disks, high-quality fittings, spool brake, folding crank, completely customizable.

**GT 310**

SL SERIES STAGE LINE

Industrial-duty powder coated steel and polycarbonate construction, stackable, high-quality fittings, folding carry handles, spool brake, folding cranks, hinged hub access hatch.

SK SERIES STAGE LINE

Industrial-duty steel frame and spool, stackable, high-quality fitting, tri-flange 3rd disk, spool brake, heavy-duty folding crank.

**GT 380****GT 450**

IP SERIES ODVA.

- IP67 Water immersion and Dust protection for harsh environment
- Wide range of operational temperature for outside plant -40° C
- Wide range of cables to be used, 5-8mm OD cable with two 2.0mm to 3.0mm jacketed subunits
- Chemical Resistance
- Intermatable to other Industrial LC adaptor per IEC 60603-7
- Durable mechanical mating, minimum of 500 matings



PIERSIDE.

The Pierside fiber optic connector is for harsh environment, broadcast, and pierside applications. This connector is available in either singlemode or multimode and uses field-proven MIL-PRF-29504 termini.

The 6 & 12-channel Pierside connector designs provide flexibility for current and future Navy communication requirements both afloat and ashore. This connector is also ideal for high fiber-count tactical broadcast networks.

Removable termini, qualified to MIL-PRF-29504 specifications, enables quick connector reconfiguration and field maintainability.

APPLICATIONS

- Umbilical cables used to interface between shore and ship networks
- Broadcast
- U.S. Army, Navy, Air Force and Marine Corp tactical and strategic deployments
- Oil, gas and geoscience industries
- Industrial



TFOCA-II® CONNECTORS.

Second generation TFOCA-11® (TFOCA-II® is a registered trademark of Amphenol Corporation) connectors feature a PC (physical contact) style ceramic-zirconia termini and may include 4, 6, or 12 fibers. These newer designs support 50/125, 62.5/125, singlemode fibers (9/125) or hybrid combinations.

The hermaphroditic TFOCA-II® connector series was designed specially for use in harsh environments. In fact, the U.S. Army has standardized on the 4-channel TFOCA-II® connector as the next generation fiber optic connector for military tactical deployable network applications.

APPLICATIONS

- Broadcast Industry
- Satellite Ground Station
- Industrial Harsh Environment
- Emergency Fiber Restoration Service
- Tactical Harsh Environment
- Mobile Communications
- Oil/Gas /Geological Industries
- Mining

OPTICALCON ADVANCED.

The need for rugged fiber optic connections continues to grow rapidly, driven by such technologies as ultra high definition (UHD) 4K or 8K television signals running at data rates of up to 24 Gb/s. To accommodate these higher bandwidth signals, the Society of Motion Picture & Television Engineers (SMPTE) has standardized opticalCON® connectors as the rugged fiber optic interface for mobile high definition television broadcasting where robust and reliable solutions are required. Neutrik's opticalCON system became the fiber optic standard in various markets.



Major Custom Cable is proud to provide the following Neutrik opticalCON® Advanced systems:

opticalCON® MTP

Based on conventional and proven MTP® connectivity, protected by a ruggedized and durable all-metal housing. It features a spring-loaded push-pull locking mechanism and excellent cable retention utilizing aramid yarn. The optical connection is exceptionally well protected against dirt and dust by a patented shutter system.



opticalCON® DUO

The ideal solution for equipment connections and system integration offering LC compatibility on chassis connector front and rear.



NK02S-A*

NK02S-S5-A*

opticalCON® QUAD

Based on the proven opticalCON® DUO connection system, but with four channels it is optimized for Point-to-Point interconnections and multi-channel routing applications. The system copes with the increasing need for fiber optic channels.



NK04S-A*

CHECKLIST

TYPE	DUO, QUAD, OR MTP
JACKET	TACTICAL FIELD CABLE OR XTREME DOUBLE JACKET
LENGTH	
COLOR	BLACK
GLASS	SINGLEMODE OR OM3 50 MICRON
FAN-OUT	
CONNECTORS	UNIBOOT LC, LC, LC/APC, SC, SC/APC, ST, D4, MU, FC, FC/APC, OR MTRJ
NOISE CANCELING CAP	
COLOR CODED RINGS	
GENUINE SCHILL GT OR HT SERIES REELS	
CUSTOM LABELS	
CUSTOM PACKAGING	
CUSTOM KITTING	



MCC IS THE ONLY OPTICALCON® MTP CERTIFIED ASSEMBLY HOUSE IN THE USA

opticalCON MTP® 16 TACTICAL ASSEMBLY

Assembled, rugged and lightweight 16-channel mobile field cable, excellent cable retention due to aramid yarn, black PUR outer jacket, available in single mode (APC).



opticalCON MTP® 24 TACTICAL ASSEMBLY

Assembled, rugged and lightweight 24-channel mobile field cable, excellent cable retention due to aramid yarn, black PUR outer jacket, available in single (APC) and multi mode (PC).



opticalCON MTP® 48 TACTICAL ASSEMBLY

Assembled, rugged and lightweight 48-channel mobile field cable, excellent cable retention due to aramid yarn, black PUR outer jacket, available in multi mode (PC).



opticalCON MTP® 16, 24, 48 CHASSIS

The rear compatibility of opticalCON MTP® 16, 24, or 48 chassis fitting with standard MTP® 16, 24, or 48 (ELITE male with 20 N springforce) breakout cable allows easy adaptation to fiber standard connectors such as LC, SC, ST. The approved dust shutter ensures high mating cycles and minimal maintenance.



N016FDW-A



N024FDW-A



N048FDW-A

opticalCON® SPLIT

Multichannel (up to 12 channel) cable solution based on opticalCON DUO, QUAD or MTP®. Excellent cable retention due to aramid yarn, black PUR outer jacket.



OPTICALCON LITE.

Major Custom Cable is a proud provider of Neutrik's OpticalCON LITE, a semi-rugged fiber optic connection used for a wide variety of applications. Its lightweight, compact design, robust housing, and high mating cycles provide a safe and cost-effective connection. Employing a novel fiber structure, the cable used with OpticalCON LITE is designed to meet the extreme conditions of the entertainment industry. The cable offers excellent bending performance, a compact design, and extreme flexibility that far exceed the mechanical strength of conventional patch cables.

We offer the following OpticalCON LITE products:

opticalCON® QUAD LITE

4 channel fiber system, improved bending performance due to new tactical fiber design, black matte outer jacket, available in multi- and single-mode.



NK04M-L*

CHECKLIST

TYPE	DUO, QUAD, OR MTP
LENGTH	
GLASS	SINGLEMODE OR 50 OM3
FAN-OUT	
CONNECTORS	UNIBOOT LC, LC, LC/APC, SC, SC/APC, ST, D4, MU, FC, FC/APC, OR MTRJ
CUSTOM LABELS	
CUSTOM PACKAGING	
CUSTOM KITTING	

opticalCON® DUO LITE

2 channel fiber system, improved bending performance due to new fiber design, black matte outer jacket, available in multi- and single-mode (PC or APC). Designed for temporary and permanent installations.



NK02M-L*

opticalCON® MTP 12 + 24 LITE

12 channel MTP® and 24 channel MTP® based fiber system, improved bending performance due to new tactical fiber design, black matte outer jacket, available in multi- and single-mode (PC or APC).



NK012SA-L*



OPTICALCON MTP®
24 LITE



SMPTE 304/311 CAMERA CABLES.

The SMPTE 304 and SMPTE 311 standards define a type of connector and cable, respectively, for use in the connection between the camera and the CCU for broadcasting and high-definition professional video, combining electrical and optical signals (copper and fiber). Designed for high-definition (HD) cameras, these composite cables can multiplex audio signals and video signals and deliver power through one single connection. Extremely rugged and reliable they also feature a low loss Telcordia® GR-326 fiber-optic end face geometry, perfect for today's most demanding cinematic and broadcast productions. With industry-standard options such as a quick disconnect push/pull self-latching system and ARIB/EBU and ANSI/SMPTE compliancy, the SMPTE 304 Connectors are among the highest performance options on the market. The composition of our SMPTE 304/311 camera cable assemblies make them perfect for use in broadcast trucks, studios, and at sports stadiums. The steel construction provides the durability necessary for continuous use in the field, while the fiber optic connectivity interfaces with today's digital cameras. These features put Major Custom Cable's SMPTE 304 connectors at the top of their class.

As the only Certified opticalCON Cable Assembler certified for every flavor of opticalCON, MCC offers combination cables that include not only LEMO name brand SMPTE connectors, but also the opticalCON DUO SMPTE. This unique product line affords integrators a path forward without having to replace both the camera and the CCU as new technologies and products adopt the opticalCON for its superior long term ease of ownership and superior optical transmission characteristics.

If you do not see a product suitable for your application, please contact us. Our extensive experience with SMPTE 304/311 and optiaCON solutions allows us to offer custom solutions to meet any unique need.

BENEFITS / FEATURES

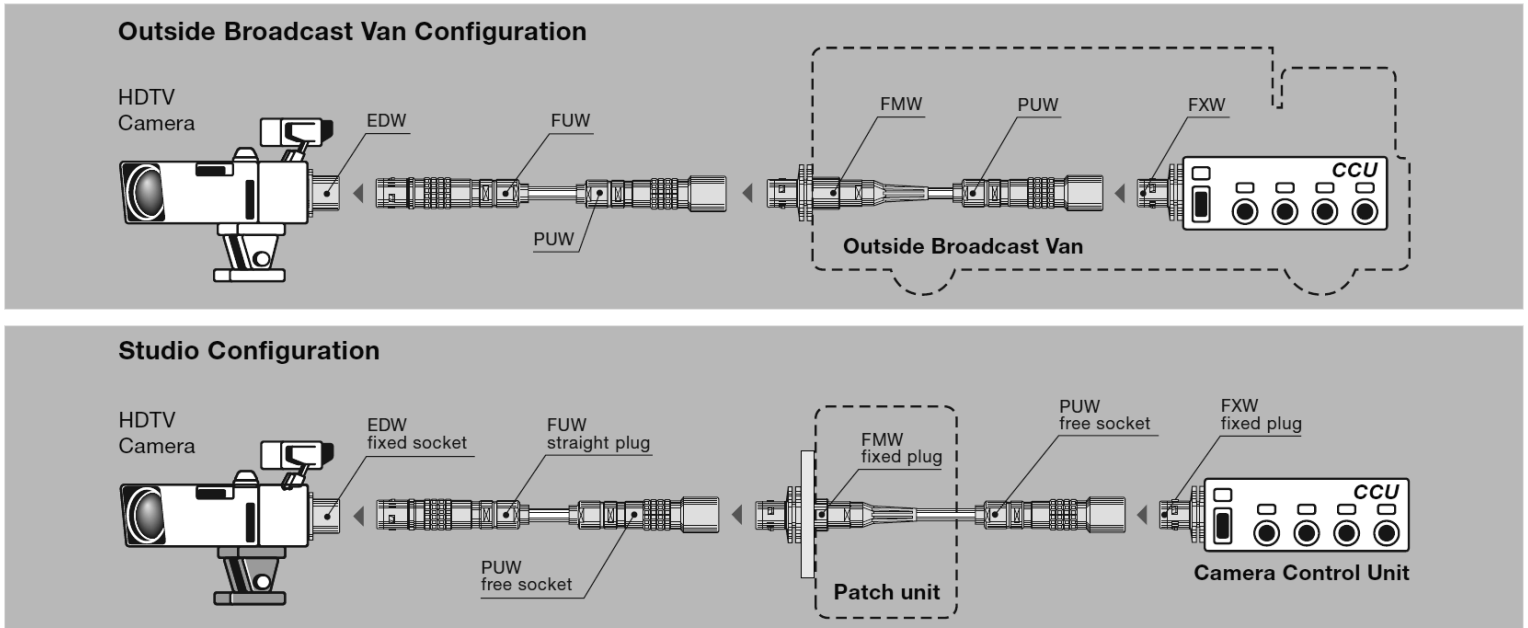
- Quick Disconnect Push / Pull self-latching system on all SMPTE 304 connectors.
- ARIB (BTA S-1005B), ANSI/SMPTE (304-2009 & 311-2009), and EBU (R100-1999) compatible.
- Fiber optic endface geometry per Telcordia® GR-326 core.
- Custom reels options available.
- Belden 7804R with matte black Belflex® jacketing. Flexible and durable.
- LEMO brand connectors for SMPTE 304 interfaces
- Neutrik brand connectors for opticalCON interfaces



CHECKLIST

CONNECTORS	FUW, PUW, FMW, PBW, OR PEW
CAPS	RUBBER, STAINLESS, OR NONE
BOOTS	RUBBER OR NONE
TYPE	HYBRID OR FIBER ONLY
JACKET	RISER, PLENUM, OR POLYURETHANE
FAN-OUT LENGTH	
CONNECTORS	UNIBOOT LC, LC, LC/APC, SC, SC/APC, ST, D4, MU, FC, FC/APC
REEL	GENUINE SCHILL GT OR HT SERIES REEL
CUSTOM LABELS	
CUSTOM PACKAGING	
CUSTOM KITTING	

TYPICAL BROADCAST CONFIGURATIONS



SMPTE PANEL PIGTAILS.

Major Custom Cable's SMPTE panel pigtails allow for independent fiber contact breakouts for all broadcast applications. A panel pigtail is a single optical fiber that has an optical connector on one end and a length of exposed fiber at the other end. The end without the connector is then stripped and spliced to the fiber used to make a connection with the end equipment. Providing an optical fiber cable with a connector is a delicate job, so using a pigtail and splicing it to the fiber cable is a common solution. All cables are made-to-order and produced to customer specified lengths.



CHECKLIST

CONNECTORS	FXW OR EDW
CAPS	RUBBER, STAINLESS, OR NONE
FIBER FAN-OUT CONNECTORS	UNIBOOT LC, LC, LC/APC, SC, SC/APC, ST, D4, MU, FC, FC/APC, MTRJ, OR BLUNT CUT
COPPER FAN-OUT CONNECTORS	6-PIN MOLEX, 6-PIN CPC, BLUNT CUT, OR MCC EXCLUSIVE TERMINAL STRIPS

SDI COAX.

Major Custom Cable offers superior pre-terminated, high-definition serial digital interface video coax cables as a convenient, cost-effective, and time-saving assembly solution. Our HD/SDI coax cables are designed to achieve superior electrical performance including faster velocity of propagation, tight impedance tolerance, low attenuation, and low structural return loss across the entire bandwidth. The result of Major Custom Cable's high-quality products is a cable that can transmit high-speed video data more accurately and reliably, even at great distances.

If you do not see a product suitable for your application, please contact us. Our extensive experience with pre-terminated HD/SDI coax cables enables us to offer custom solutions to meet any unique need.



CHECKLIST

TYPE	179DT, 1855A, 1505F, 1505A, 1506A, 1694F, 1694A, OR 1695A
JACKET	FLEXIBLE, RISER, OR PLENUM
LENGTH	
NUMBER OF CONDUCTORS	
CONNECTORS	NEUTRIK REAR TWIST BNC, CANARE WECO, OR AMPHENOL HD-BNC
CUSTOM LABELS	
CUSTOM PACKAGING	
CUSTOM KITTING	
BIT RATE	HD, 3G, 6G, 12G, 24G

UHD 4K8K

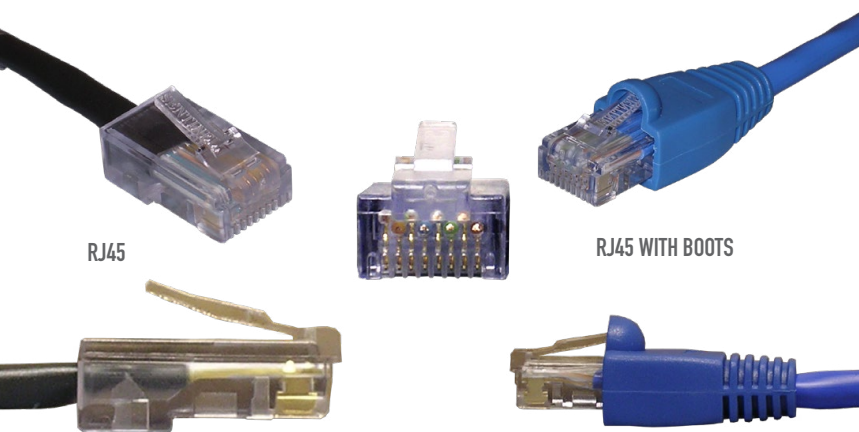
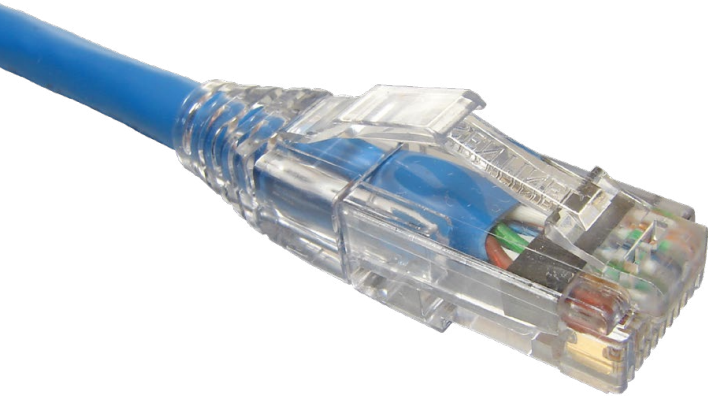
CATEGORY 6 COMPLIANT PATCH CORDS.

- All of our Cat 6 patch cords are compliant with TIA/EIA-568B.2-1 standards
- Testing the patch cords ensures channel compliance with applicable standards and compatibility with any correctly installed and tested permanent link cable plant
- Major Custom Cable utilizes the DSX-5000 with patch cord test heads to test our Cat 6 patch cords, and test results can be shipped upon request
- MCC guaranteed gigabit patch cords utilize Category 6 modular plugs and Category 6 cable
- MCC follows the manufacturers recommended procedures to ensure gigabit performance from all patch cords
- Stranded patch cord lengths up to 65ft
- Solid patch cords lengths up to 328ft



CATEGORY 6A

Category 6A, future proofing network design with robust levels of headroom for next generation infrastructure technologies driven by high bandwidth applications. Exceeding requirement of ANSI/TIA-568-C.2 Category 6A and ISO 11801 Class 6a standards for Insertion Loss, NEXT, Power Sum NEXT, Power Sum ACR-F, Return Loss, Power Sum ACR-N, Power Sum Alien NEXT, and Power Sum AACR-F. Offered in configuration from 28awg to 23awg. Shielded and unshielded options available. Stocked in a wide array of colors.



RJ45

RJ45 WITH BOOTS

CHECKLIST

- CONNECTORS (RJ45 or BLUNT)?
- WIRE CODE?
- CABLE (STRANDED or SOLID)?
- JACKET (PVC or PLENUM)?
- SHIELDED?
- LENGTH?
- COLOR?
- BOOTS?
- CUSTOM IMPRINTING (SHRINK, LABEL, SEQUENTIALLY NUMBERED)?

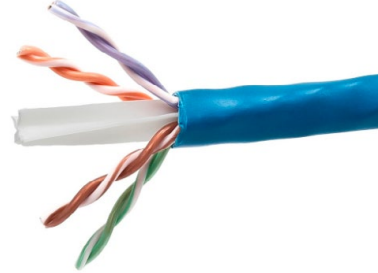
NANOTEK COPPER.

38% SMALLER THAN REGULAR CAT6!

Category 6, Class E, slim diameter patch cords are constructed using 28awg, unshielded, twisted pair, stranded patch cable using only the highest performance RJ45 connectors with 50um of gold plating. Cable diameter of .14" (3.2mm nominal). LSOH per IEC 60754-2, 61034-1, 61034-2, UL ETL 300v CM jacketing available in a wide array of colors



CONVENTIONAL CAT6: 5.1MM



NANOTEK: 3.2MM

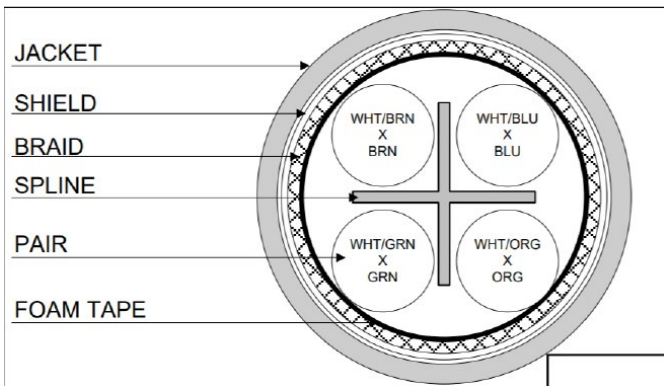


DURASHIELD®

Major Custom Cable is proud to offer Durashield®, the next level in deployable category rated patch cables. Durashield®'s continuous flex-cycle, tactical grade industrial jacket withstands harsh environments and is widely known as the best in cut, abrasion, and moisture resistance. These patch cords are double shielded for increased signal isolation to prevent outside interference and offer tighter specifications for eliminating crosstalk and noise.

Major Custom Cable's thorough testing ensures compatibility with any correctly installed and tested permanent link cable plant. Robust designs ensure fast, repeatable, and reliable connections, and follow the manufacture's recommended procedures to ensure gigabit performance.

If you do not see a product suitable for your application, please contact us. Our extensive experience with patch cables allows us to offer custom solutions to meet any unique need.



CHECKLIST

TYPE	CAT 5E SOLID CONDUCTOR OR CAT 6A STRANDED CONDUCTOR
CONNECTORS	RJ45, ETHERCON, OR ODVA
PIN-OUT	568B OR CROSSOVER
JACKET	ONLY THE BEST IN CUT, ABRASION, AND MOISTURE RESISTANCE
SHIELDED	DOUBLE SHIELDED, FOIL + BRAID
LENGTH	
COLOR	BLACK
BOOTS	BUBBLE BOOTS OR CLEAR SLIM LINE
SPOOLS	AIR SPOOL (HAND COILED), TRI-FLANGE SHIPPING SPOOLS, GENUINE SCHILL GT, OR HT SERIES REELS
PULLING BALES	METAL MESH PULL LOOP ONE END OR BOTH
CABLE JIMMY	MCC'S GENUINE MESH SLEEVE DESIGNED FOR MAXIMUM PROTECTION OF FAN-OUTS. ONE END OR BOTH
CUSTOM LABELS	
PACKAGING	
CUSTOM KITTING	

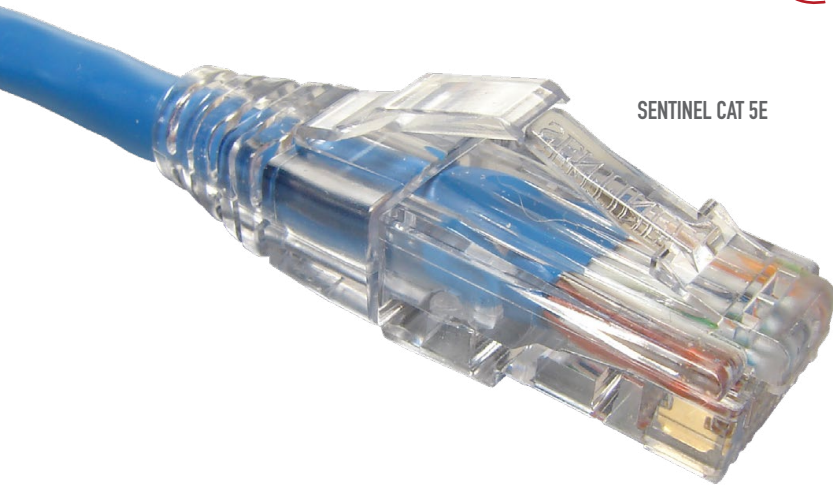
CATEGORY 5E PATCH CORDS (350 MHZ).

MCC Cat 5E patch cords are made from the highest quality components and are compatible with 10/100/1000BaseT Ethernet, Token Ring, and ATM over twisted pair. Choose from Mohawk, Belden, Berk-Tek, or globally sourced materials.

ACCESSORIES



CUSTOM IMPRINT PATCH CORDS WITH YOUR INFORMATION!



SENTINEL CAT 5E



CHECKLIST

- CONNECTORS (RJ45 or BLUNT)?
- WIRE CODE?
- CABLE (STRANDED or SOLID)?
- JACKET (PVC or PLENUM)?
- SHIELDED?
- LENGTH?
- JACKET COLOR?
- BOOTS?
- BOOT COLOR?
- CUSTOM IMPRINTING (SHRINK, LABEL, SEQUENTIALLY NUMBERED)?

ETHERCON.

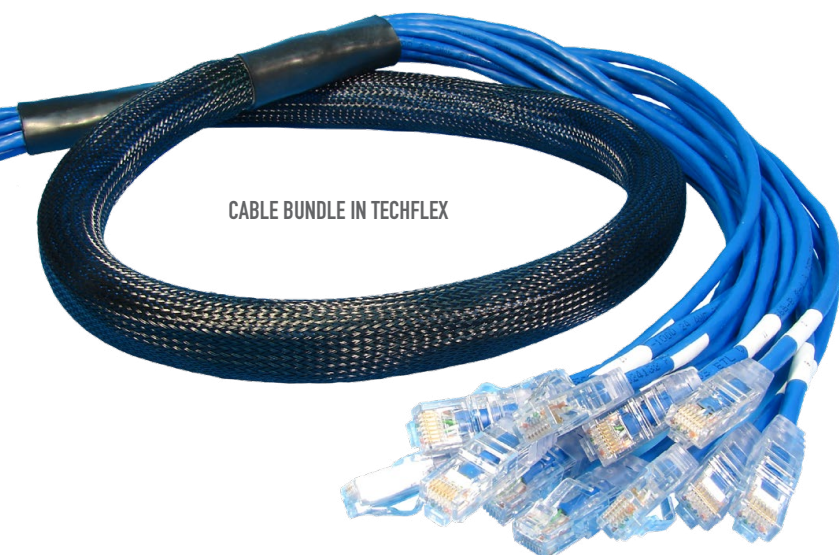
RUGGED, DURABLE RJ45 CONNECTIONS

CAT 6 ETHERCON

- CAT6 compliant - data rate up to 10 GBit/s
- IP65 Dust and water resistant in mated condition
- Push Pull mating design provides secure locking system
- Shielded system - high noise immunity and EMI protection
- IDC contacts offer gas-tight termination
- Ready made patch cables with rugged diecast cable carrier and unique chuck-type strain relief

CAT 5E ETHERCON

- The RJ45 system for harsh and demanding environments
- Cable carrier has rugged diecast shell and unique chuck type strain relief
- Protects Ethernet connections in a variety of commercial type applications and is designed to prevent breakage of the fragile components of standard RJ45 connectors



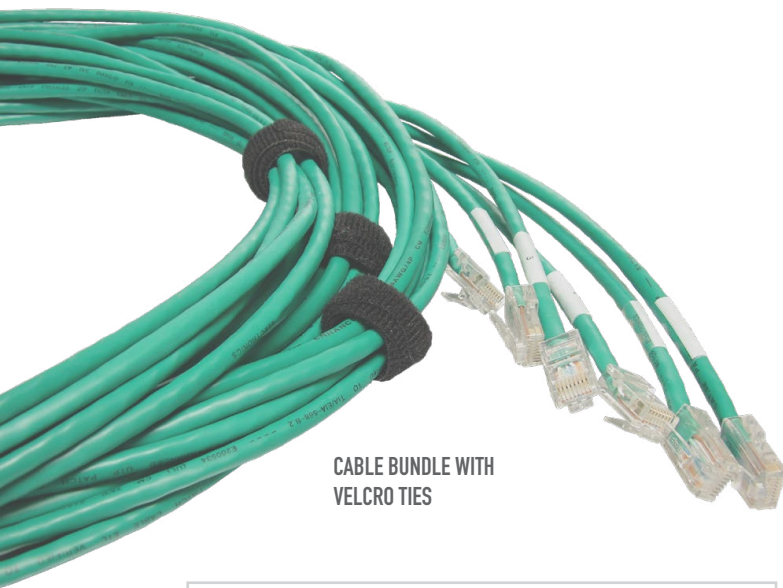
CABLE BUNDLE IN TECHFLEX

PATCH CORD BUNDLES.

Major Custom Cable's skilled production staff will manufacture your patch cord bundles to your designated specifications. Call now and find out what MCC can do for you!



PATCH PANEL ADAPTERS



CABLE BUNDLE WITH VELCRO TIES



CHECKLIST

- CONNECTORS (RJ45 or RJ11)?
- WIRE CODE?
- CABLE (STRANDED or SOLID)?
- JACKET (PVC or PLENUM)?
- SHIELDED?
- LENGTH?
- BREAKOUT LENGTH?
- JACKET COLORS?
- BOOTS?
- BOOT COLORS?
- CABLE TIES (TECHFLEX, VELCRO, or PLASTIC ZIP)?
- CUSTOM IMPRINTING (SHRINK, LABEL, SEQUENTIALLY NUMBERED)?

LOW LOSS 50 OHM.

APPLICATIONS

- 2 way land communications
- CLEC
- Broadband Wireless
- IEEE 802.11a thru IEEE 802.11g
- Wireless Internet
- Any standard outdoor installation where RG-type 50 ohm coax is required.
- Riser and plenum options are available.

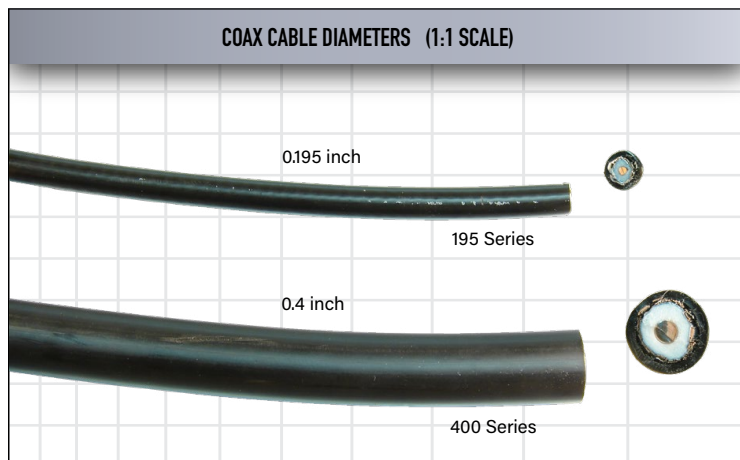
ATTRIBUTES

- Low halogenated, UV and weather resistant PE jacket material.
- Tinned copper braided shield coupled with an aluminum tape ensure maximum shielding from EMI/RFI.
- The foam PE dielectric coupled with copper clad aluminum center conductor ensure maximum flexibility with similar performance attributes to less installer friendly corrugated products.
- Compared to standard RG type cables, these low loss cables offer the best in signal clarity, and better RF Shielding.

CONNECTORS

- 7-16
- BNC
- N
- SMA
- TNC
- HN
- QDS
- Mini-UHF
- UHF

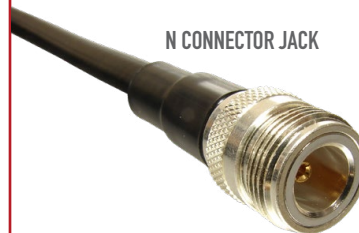
Standard and Reverse Polarity Options!



REVERSE POLARITY TNC JACK



SMA CONNECTOR PLUG



TNC CONNECTOR PLUG



REVERSE POLARITY SMA PLUG



Connectors not to scale



ETHERCON® ASSEMBLIES.

ETHERCON® TOP SERIES

The highly innovative entertainment industry is permanently evolving accompanied by increasing demands on interconnection systems. Particular environmentally sealed connectors are highly requested for heavy-duty and harsh environment applications of entertainment equipment like PA systems, signs and LED screens or lightings.

Neutrik took up the challenge and developed a new line of TRUE OUTDOOR PROTECTION (TOP) products for demanding outdoor applications. This new range includes the popular powerCON TRUE1, etherCON and XLR series. These ruggedized sealed connectors feature IP65 rating as well as certified outdoor protection to UL 50E like UV resistance.

NE8MXR-B-TOP



NE8MX-B-TOP



NE8MX-B-TOP-14



ETHERCON® CABLE ASSEMBLIES

The etherCON cable connector carries upgrade a conventional RJ45 connector to an extremely robust lockable solution. Two different versions allow the protection of already assembled or unassembled RJ45 connectors.

NE8MX



NE8MX-B



NE8MX-1



NE8MX-B-1



ETHERCON® CAT6 CABLES

The preassembled etherCON CAT6 patch cables use a shielded S/FTP cable with cable plug carrier offering a robust metal shell and Push-Pull locking system.



ETHERCON® CAT6A CABLE ASSEMBLIES

etherCON CAT6A cable connector for self-termination

NE8MX6



NE8MX6-B



NE8MX6-T



NE8MX6-B-T



SPEAKON® CABLE ASSEMBLIES.

The speakON cable connectors are the industry-standard connectors for amplifier / loudspeaker connections. The entire family of 2, 4 and 8 pole cable connectors has been designed to operate in high current, inductive load environment of loudspeakers.

SPEAKON® STXX SERIES



SPEAKON® FXX SERIES



SPEAKON® FC SERIES



SPEAKON® CABLE CONNECTOR ACCESSORIES



POWERCON® TRUE1 CABLE ASSEMBLIES.

powerCON® TRUE1 POWER CORD - OPEN END

Ready-made overmolded power cord in protection class IP65. The cable utilizes standard duty cord with 3 conductors with cross section 1.5 mm² or AWG 12.

The cables are equipped with overmolded Neutrik powerCON TRUE1 NAC3FX-W or NAC3MX-W. The other end is open for termination of local connectors. Overmolded local connectors on request. The cables are available in different lengths.



powerCON® TRUE1 TRUE1 - SCHUKO CORDSET

Ready-made power cord equipped with an overmolded Neutrik powerCON TRUE1 NAC3FX-W and a straight or right angled Schuko connector. The cables are available in different lengths.



powerCON® TRUE1 TRUE1 - INTERCONNECTION CORDSET

Ready-made overmolded power cord in protection class IP65. The cable utilizes standard duty cord with 3 conductors with cross section 1.5 mm² or AWG 12.

The cables are equipped with Neutrik powerCON TRUE1 NAC3FX-W and NAC3MX-W. Cables are available in different lengths.



powerCON® TRUE1 TRUE1 - EXTENSION CORD



POWERCON® FXX SERIES CABLE ASSEMBLIES.

powerCON® FXX INTERCONNECTION CORDSET

Experience full compliance, unwavering reliability, and top-notch safety, all within your budget.

Neutrik Essential series Interconnection cords sets.

FEATURES

- Interconnection cord sets (local mains connectors – powerCON® FXX)
- High quality rubber cables or PVC jacketed power cables
- Cables with 1.5mm² and 2.5mm² conductor cross section
- powerCON® connectors (NAC3FXXA / NAC3FXXXB), certified according to the EN60320-1
- Ruggedized powerCON® connectors with Circuit Breaking Capacity (CBC)
- IP20
- Interconnection cord sets compliant to the IEC60799
- Attractive price / value ratio



powerCON® FXX CORDSET

Experience full compliance, unwavering reliability, and top-notch safety, all within your budget.

Neutrik Essential series Cords sets.



XLR TOP SERIES CABLE ASSEMBLIES.

The highly innovative entertainment industry is permanently evolving accompanied by increasing demands on interconnection systems. Particular environmentally sealed connectors are highly requested for heavy-duty and harsh environment applications of entertainment equipment like PA systems, signs and LED screens or lightings.

Neutrik took up the challenge and developed a new line of TRUE OUTDOOR PROTECTION (TOP) products for demanding outdoor applications. This new range includes the popular powerCON TRUE1, etherCON and XLR series. These ruggedized sealed connectors feature IP65 rating as well as certified outdoor protection to UL 50E.



NC3FX1-TOP



NC3MX1-TOP



NC4FX1-TOP



NC4MX1-TOP



NC5FX1-TOP



NC5FX1-TOP-14



NC5MX1-TOP



NC5MX1-TOP-14



NC10MX-TOP



NC10FX-TOP



XLR XX SERIES CABLE ASSEMBLIES.

The next generation of the worldwide accepted standard of XLR cable connectors. The successor of the X series offers several new features which make it more reliable, easier to assemble and improves contact integrity as well cable strain relief.





MAJOR CUSTOM CABLE

A **Neutrik Group** Company

281 Lotus Dr.
Jackson, Missouri 63755

www.MajorCustomCable.com

(800) 455-6224



MAJOR CUSTOM CABLE

A Neutrik Group Company